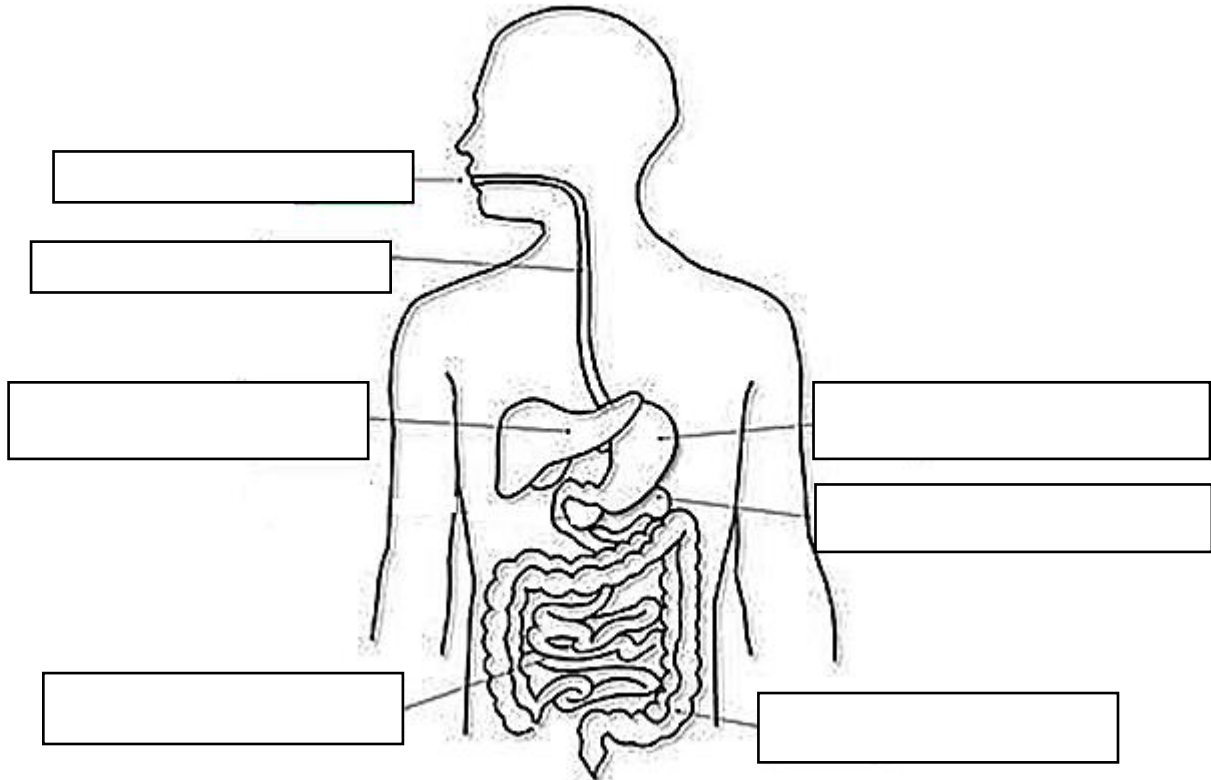


Chapter 2: Digestion

I. Label the parts of the human digestive system given below and arrange the sentences in correct sequence to describe the process of digestion.



- A. The food enters the stomach through the food pipe. [     ]
- B. The food then reaches a long coiled tube called small intestine. [     ]
- C. The teeth chew the food and the saliva secreted by salivary glands gets mixed with the food. saliva breaks down Carbohydrates into simple sugars. [     ]
- D. The walls of the large intestine absorb the extra water from the undigested food and solid waste is passed out through the anus. [     ]
- E. Useful substances from the digested food enter the blood vessels in the small intestine. [     ]

F. The digestion of food begins in the mouth. [      ]

G. Digestive juices from the walls of the small intestine, liver and pancreas get mixed with the food.

These juices help to completely digest the food. [      ]

H. The stomach churns the food into a fine paste. Digestive juices in the stomach get mixed with the food to breakdown the proteins present in it into simpler substances. [      ]

I. The undigested food is passed into the large intestine. [      ]

**II. Write true or false:**

1. Useful substances from the digested food give us energy to carry out different activities. (            )
2. The process of digestion ends in the large intestine. (            )
3. The small intestine is longer than the large intestine. (            )
4. Water from the undigested food is absorbed in the large intestine. (            )
5. Blood takes the useful substances from the digested food to every part of the body. (            )
6. Digestive juices from the liver and pancreas get added to the food in the stomach. (            )

**III. Match the organs to their functions.**

- |                    |                                                    |
|--------------------|----------------------------------------------------|
| 1. Mouth           | ●the solid waste is removed from the body. (   )   |
| 2. Stomach         | ●digestion is completed. (   )                     |
| 3. Large intestine | ●saliva mixes with the food to make it soft. (   ) |
| 4. Food pipe       | ●food is churned for 3-4 hours (   )               |
| 5. Anus            | ●water is absorbed from the undigested food (   )  |
| 6. Small intestine | ●connects the mouth to the stomach (   )           |

**IV. Give reasons:**

1. Rest a while after eating.
- 
-